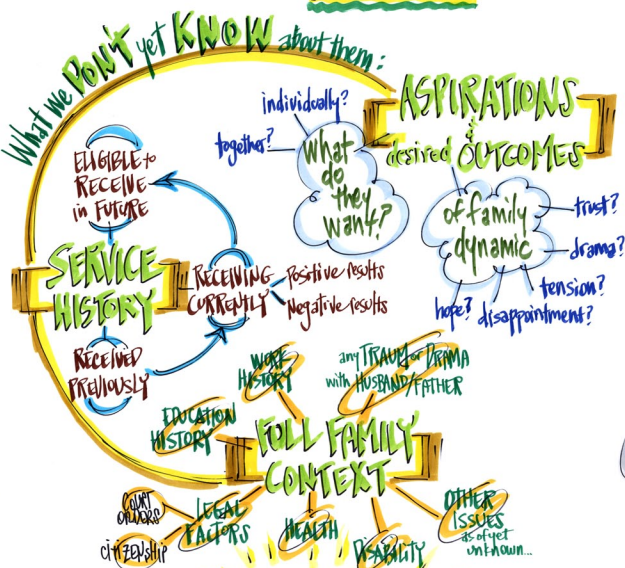
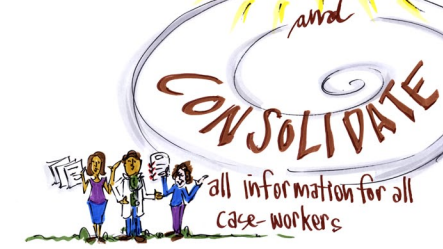


What we need from our **CLIENTS** is:



We need to **CLARIFY** the services provided by the **SHORT-TERM** and **LONG-TERM** sectors **and**



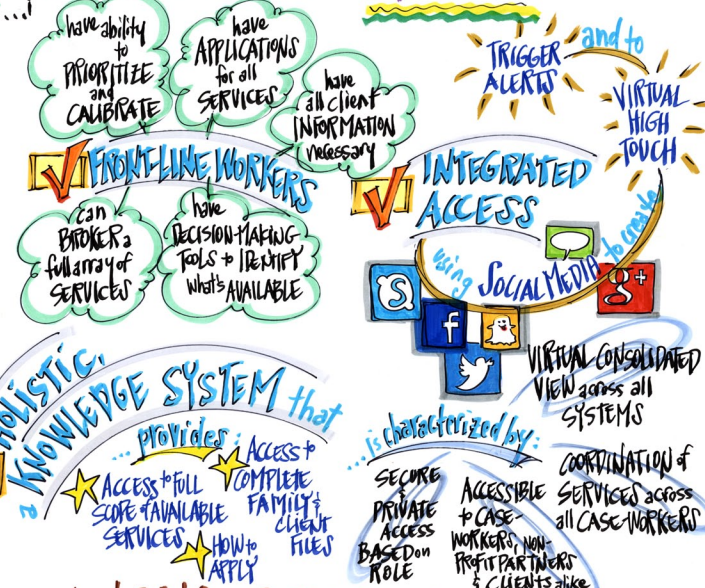
# The GARCIA Family



I just want my daughter to come home



What we need from our **SYSTEMS** is:



## HOLISTIC KNOWLEDGE SYSTEM that

**SHORT-TERM** (stabilization)

the TREATMENT for GETTING clean & sober

**LONG-TERM** (transition)

the RECOVERY for STAYING clean & sober

and determine how they **FEEDBACK** and how we **MEASURE** outcomes.

Look at LOCAL & COUNTY trends as our **BASELINE** for typical episodes of care.

